

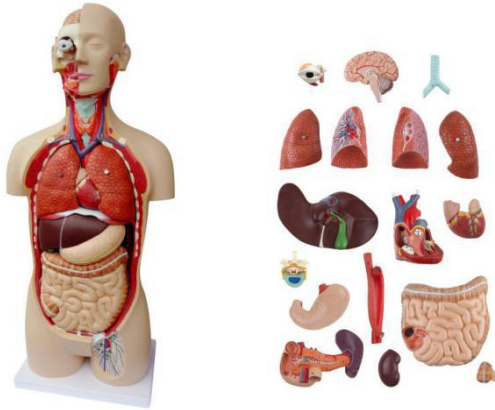
Anatomy



Human anatomy

JY/A5001 Sexless Torso: 18-part

Features:

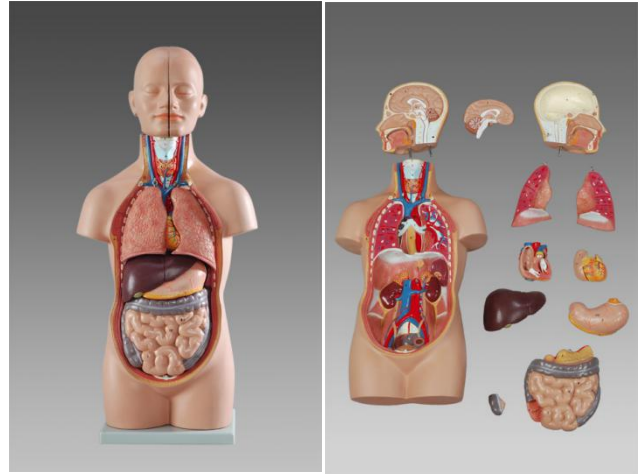


1. This life-size, sexless torso is appropriate for any human anatomy course. All of the major organ systems are represented with great attention and accuracy to detail.
2. Structures are numbered and identified on the accompanying key.
3. The head is open, exposing one half of the brain. The neck is dissected.

JY/A5003 Sexless Torso

Features:

Sexless Torso: 12 parts, 50cm



JY/A5005 Dual Sex Torso: 27-part with open back

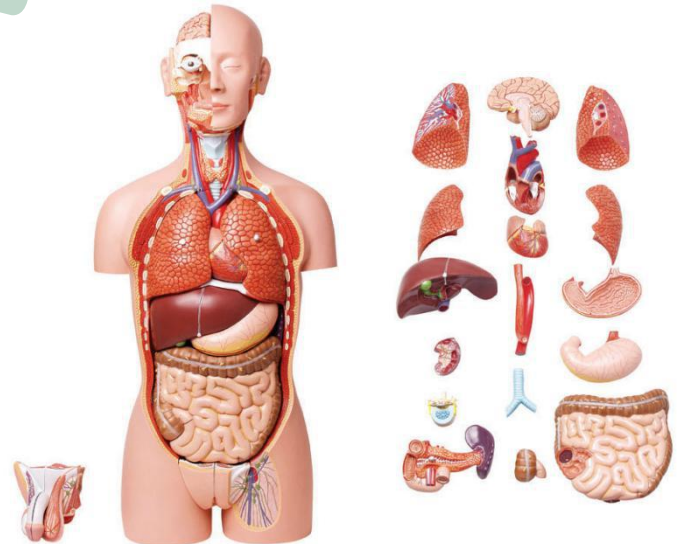
Features:

JY/A5002 Sexless Torso: 17-part

Features:



1. This life-size, sexless torso is appropriate for any human anatomy course. All of the major organ systems are represented.
2. Structures are numbered and identified on the accompanying key.
3. The head is open, exposing one half of the brain. The neck is dissected



1. This life-size, 85cm sexless torso is appropriate for any human anatomy course. All of the major organ systems are represented with great attention and accuracy to detail.
2. Structures are numbered and identified on the accompanying key.
3. The head is open, exposing one half of the brain. The neck is dissected.

JY/A0001 Artificial Human Skeleton (Male)

JY/A0002 Artificial Human Skeleton (Male)

Features:

1. Natural size 180cm with base.
2. The model shows all the anatomic details of the skeleton structure.
3. Joints, upper and lower extremities are removable.



JY/A0004

Mini Skeleton (45cm)

Features:

1. 45cm height, metal hanger, normal erect posture, limb can be removable,
2. Display bony framework and physical relations.
3. Material: advanced PVC



JY/A0003 (85cm)

Artificial Human Skeleton (85cm)

Features:

1. Model with base shows all the anatomic details of the skeleton structure.
2. Joint and upper, lower extremities are removable.



JY/A0005

Human Skeleton with Half-side Painted Muscles Model

Features:

1. With half side painted muscle model (180cm)
2. Material: advanced PVC



iskyssoft



JY/A0006

Human Skeleton with One-side Painted Muscles and ligament

Features:



1. With one-side painted muscles (180cm) and ligament
2. Material: advanced PVC

JY/A0007

Disassembled Skeleton

Features:



1. Life-size disarticulated adult skeleton
2. Material: Advanced PVC

JY/A1001

Spine with Pelvis (flexible/inflexible)

Features:

Size: Life size

Material: Advanced PVC



JY/A1002

Spine with Pelvis and Femur

Features:

Size: Life size

Material: Advanced PVC



JY/A1003

Flexible Spinal Column with Femur, with Muscle Insertion

Features:

Size: Life size

Material: Advanced PVC



JY/A1004

Flexible Spinal Column, with Femur, Open Sacrum, with Muscle Insertion

功能概述:

Size: Life size

Material: Advanced PVC



JY/A1005 Spine

Features:

Size: Life size

Material: Advanced PVC



JY/A1009

Lumbar Vertebra, Sacral Bone with Spinal Nerves

Features:

Size: Life size

Material: Advanced PVC



JY/A1006 Cervical Vertebral Column

Features:

Size: Life size

Material: Advanced PVC



JY/A1010 Atlas Axix with Occipital Bone Model

Features:

Life size, fixed on the base plate.

Material: Advanced PVC



JY/A1007 Thoracic Vertebra

Features:

Life size, fixed on the base plate

Material: Advanced PVC



JY/A1011 Arm, Scapula and Collar Bone

Features:

Size: Life size

Material: Advanced PVC



JY/A1008 Lumbar Vertebra

Features:

Size: Life size

Material: Advanced PVC



JY/A1012 Arm Bone

Features:

Size: Life size

Material: Advanced PVC



Anatomy



Human anatomy

JY/A1013

Palm Bone with Elbow Bone and Radial Bone

Features:

Size: Life size

Material: Advanced PVC



JY/A1017 Male Pelvis

Features:

Size: Life size

Material: Advanced PVC



JY/A1014 Lower Limb with Hip Bone

Features:

Size: Life size

Material: Advanced PVC



JY/A1018 Female Pelvis

Features:

Size: Life size

Material: Advanced PVC



JY/A1015 Low Limb Bone

Features:

Size: Life size

Material: Advanced PVC



JYA1019 Female Pelvis with Fetal Head

Features:

Size: Life size

Material: Advanced PVC



JY/A1016 Bones of Foot, Calf Bone, Shinbone

Features:

Size: Life size

Material: Advanced PVC



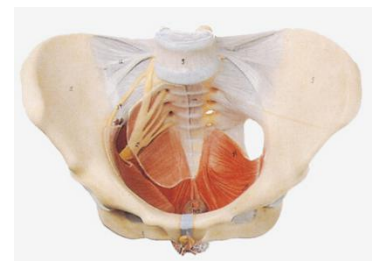
JY/A1020 Female Pelvic with Floor Muscle

Features:

The model shows the female pelvis, pelvic ligament, pelvic floor muscle, nerve and perineum, etc.

Size: Life size

Material: Advanced PVC



JY/A1021
Pelvis with 2pcs Lumbar Vertebra and Femur

Features:

Size: Life size

Material: Advanced PVC

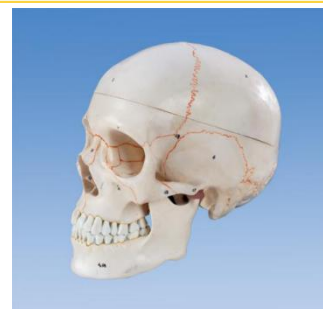


JY/A2002
Skull Model with Number

Features:

Size: Life size

Material: Advanced PVC



JY/A1022 Pelvis with 2pcs Lumbar Vertebra

Features:

Size: Life size

Material: Advanced PVC



JY/A2003 Colored Skull

Features:

Size: Life size

Material: Advanced PVC



JY/A1023 Pelvis with 5 pcs Lumbar Vertebra

Features:

Size: Life size

Material: Advanced PVC



JY/A2004 Skull with Cervical Column Model

Features:

Size: Life size

Material: Advanced PVC



JY/A2001 Skull

Features:

Size: Life size

Material: Advanced PVC



JY/A2007 Baby Skull Model

Features:

Size: Life size

Material: Advanced PVC



Anatomy



Human anatomy

JY/A2008 Mini Skull Model

Features:

Size: 1/2 life size

Material: Advanced PVC



JY/A3001B Shoulder Joint

Features:

Size: 1/2 Life size

Material: Advanced PVC



JY/A2009 Skull Separation

Features:

Size: Life size

Material: Advanced PVC



JY/A3002 Elbow Joint

Features:

Size: Life size

Material: Advanced PVC



JY/A3001 Shoulder Joint

Features:

Size: Life size

Material: Advanced PVC



JY/A3002A Elbow Joint with Ligament

Features:

Size: Life size

Material: Advanced PVC



JY/A3001A Shoulder Joint with Ligament

Features:

Size: Life size

Material: Advanced PVC



JY/A3003 Hand Joint

Features:

Size: Life size

Material: Advanced PVC



JY/A3003A Hand Joint with Ligament

Features:

Size: Life size

Material: Advanced PVC



JY/A3005 Knee Joint

Features:

1. Size: Life size

2. Material: Advanced PVC



JY/A3004 Hip Joint

Features:

Size: Life size

Material: Advanced PVC



JY/A3005A Knee Joint with Ligament

Features:

Size: Life size

Material: Advanced PVC



JY/A3004A Hip Joint with Ligament

Features:

Size: Life size

Material: Advanced PVC



JY/A3005B Knee Joint

Features:

Size: 1/2 life size

Material: Advanced PVC



JY/A3004B Hip Joint

Features:

Size: 1/2 life size

Material: Advanced PVC



JY/A3006 Foot Joint

Features:

Size: Life size

Material: Advanced PVC





JY/A3006A Foot Joint with Ligament

Features:

Size: Life size

Material: Advanced PVC



JY/A3007

4 Stages Knee Joints Synthesis Model

Features:

Size: Life size

Material: Advanced PVC



JY/A3008 Knee Joints Synthesis Model

Features:

Size: 1/2 life size

Material: Advanced PVC



Muscles of Male with Internal Organs

JY/A7001 (78cm)

JY/A7002 (170cm)

Features:



1. The model consists of 27 parts, such as muscles of chest wall and abdomen, muscles of upper and lower limbs, skull, etc.

2. It shows the structure of head, neck, torso, upper and lower limbs, muscles, muscle tendon, ligaments, viscus, blood vessels, brain, internal organs, etc.

Material: Imported PVC and paint

Muscles of Male

JY/A7003 (78cm)

JY/A7004 (170cm)

Features:

1. The model consists of 18 parts, such as muscles of chest wall and abdomen, muscles of upper and lower limbs, skull, etc.

2. It shows the structure of head, neck, torso, upper and lower limbs, muscles, muscle tendon, ligaments, etc.

Material: Imported PVC and paint



JY/A7005 Muscles Figure

Features:

1. 51 positions are displayed. Shows the topography of muscles.

2. Size: 50cm*24.5cm*10cm

3. Material: Advanced PVC and paint



JY/A7006 Muscles of Human Arm

Features:



1. Shows the network of blood vessels and nerves in the right arm, short and long extensor muscle of the radial wrist with branchioradialis muscle, round pronator muscle, superficial flexor muscle of the fingers.
2. Separated into 6 parts and 79 positions displayed.
3. Size: 85cm*23cm*18cm
4. Material: Advanced PVC and paint

JY/A7008 Muscle of Human Leg

Features:



1. Shows the most important blood vessels and nerves in the left leg, greatest gluteal muscle, tensor muscle of the broad fascia, sartorius muscle, strait muscle of the femur, semi-Membranous muscle, semitendinous muscle, biceps Muscle of the femur, digitorum longus muscle, triceps muscle of the calf.
2. Separated into 10 parts and 119 positions are displayed.
3. Material: Advanced PVC and Paint

JY/A7007 Hand with Main Vessels and Nerves

Features:

1. The model shows the networks of blood vessels and nerves, ligamentous apparatus.
2. Separated into 5 parts and 42 positions are displayed.
3. Material: Advanced PVC and Paint



JY/A7009

Muscles of Foot with Main Vessels and Nerves

Features:

1. Shows the network of blood vessels and nerves, ligamentous apparatus.
 2. Separated into 9 parts and 52 positions are displayed.
- Size:21cm*9.2cm*33cm G.W.:1.1kg
Material: Advanced PVC





JY/A7010 Normal, Flat, Arched Foot

Features:

1. Comes with normal foot, flat foot and arched foot, one for each.
2. Size: Life size.
3. Material: Advanced PVC and Paint



JY/A6078 Human Digestive System

Features:

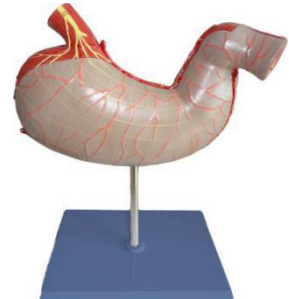
1. The model shows alimentary canal from mouth to rectum in median section and included buccal cavity, pharynx, esophagus with half of the stomach, the opened duodenum, small and large intestine, the opened appendix, the unfolded rectum, the transverse colon, liver and pancreas.
2. Mounted on a base, Separated into two parts and 51 positions are displayed.
3. Size: 79cm*27cm*8.5cm
4. Material: Advanced PVC and Paint



JY/A6081 Stomach Model

Features:

1. The model shows the longitudinal and circular muscle layers, cardia and pylorus, the mucous membrane and the gastric canal, stomach wall, network of arteries and nerve.
2. Separated into 2 parts and 22 positions are displayed.
3. Size: 2 times enlarged.



JY/A6080 Disease Stomach

Features:

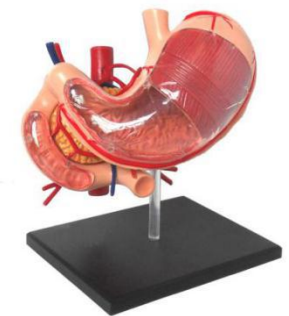
1. Size: Life size, 2 parts.
2. Material: Advanced PVC



JYA6082 4D Stomach Model

Features:

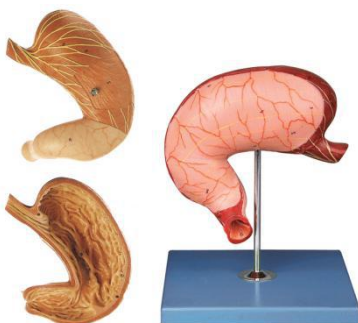
1. Size: 2/3 life size, 9 parts.
2. Material: Advanced PVC.



JY/A6079 Stomach Model

Features:

1. The model shows the longitudinal and circular muscle layers, cardia and pylorus, the mucous membrane and the gastric canal, stomach wall, network of arteries and nerve.
 2. Separated into 2 parts and 10 positions are displayed
- Material: Advanced PVC and Paint



JY/A6083 Stomach Wall

Features:

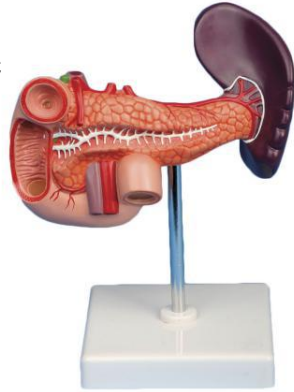
1. Demonstrated in transverse and vertical section. It shows structure of layers of stomach wall.
2. 10 positions are displayed



JY/A6084 Pancreas, Duodenum and Spleen

Features:

1. The model shows pancreas, pancreatic duct, partly opened duodenum.
2. 13 positions are displayed.
3. Size: life size
4. Material: Advanced PVC



JY/A6085 Pancreas, Gallbladder and Spleen

Features:

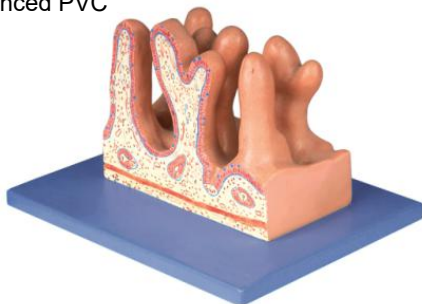
1. Size: Life size,
2. Material: Advanced PVC



JY/A6086 Internal Surface of Jejunum

Features:

1. Shows finger-like protrusions represent villi, cavities crypts.
2. 13 positions are displayed.
3. Size: 380 times life size, 13cm*16cm*8.5cm
4. Material: Advanced PVC



JY/A6087 Appendix and Caecum

Features:

1. Shows wall of the caecum and appendix.
2. Separated into 2 parts and 17 positions are displayed.
3. Size: 16cm*10cm*6 cm
4. Material: Advanced PVC



JY/A6088 Liver

Features:

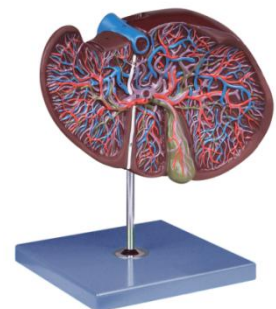
1. The model shows for lobes of the liver, peritoneum gall bladder and vessels.
2. 8 positions are displayed.
3. Size: life size
4. Material: Advanced PVC



JY/A6089 Liver and Gall Bladder

Features:

1. Shows branched of the vessels in the liver, the bile duct system.
2. 28 positions are displayed.
3. Size: 2 times size,
4. Material: Advanced PVC



JY/A6001 Tongue

Features:

1. Shows the tongue structure, separated into 3 parts.
2. Size: Life size,
3. Material: Advanced PVC





JY/A6002 Median Sagittal Section of Nasal Cavity

Features:

1. 18 positions are displayed.
2. Mounted on a base.
3. Material: Advanced PVC and paint.



JY/A6003

Nasal Cavity, Oral Cavity, Throat, Pharynx

Features:

1. 35 positions are displayed
2. Size: Life size
3. Material: Advanced PVC



JY/A6004 Larynx

Features:

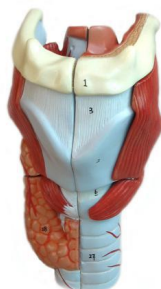
1. Model sectioned longitudinally to reveal details of internal structures, including laryngeal cartilages, laryngeal muscles, laryngeal cavity, muscle, vessels, nerves, and thyroid gland.
2. Separated into 2 parts.
3. Size: 2 times enlarged
4. Material: Advanced PVC and paint



JY/A6005 Larynx

Features:

1. Consists of two median sagittal sections and shows the structures of laryngeal cartilage, laryngeal muscles and laryngeal cavity, etc.
2. Total 15 positions are displayed.
2. Size: Life size
3. Material: Advanced PVC and paint



JY/A6006 Functional Model of Larynx

Features:

1. This enlarged model shows the anatomical structure of laryngeal cartilages, aryngal muscles, and laryngeal cavity.
2. Cricothyroid joint can be moved, simulating opened or closed glottis.
3. Material: Advanced PVC and paint



JY/A6007

Larynx, Trachea and Bronchial Tree Model

Features:

1. A life-size model sectioned longitudinally to reveal details of internal structures, including larynx, trachea, left and right main bronchus, segmental bronchi, etc.
2. 30 positions are displayed.

Size: Life size

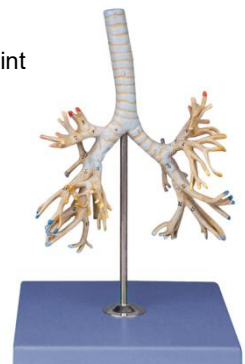
Material: Advanced PVC and paint



JY/A6008 Bronchial Tree

Features:

1. The model shows trachea, left and right main bronchi, lobular bronchi and segmental bronchi.
2. Size: Life size
3. Material: Advanced PVC and paint



JY/A6009 Transparent Lung Segment Model

Features:

1. The model shows 10 lung segments of the left and right lungs.
2. Size: Magnified
3. Material: Advanced PVC and paint



JY/A6010 Lung Segments Model

Features:

1. The model shows 10 lung segments of the left and right lungs.
2. Size: Life size
3. Material: Advanced and paint



JY/A6011 Lobule and Alveolus of Lung

Features:

1. This unit consists of lobule model and alveolus model.
2. Magnified lobule shows terminal bronchiole, respiratory bronchiole, alveolar epithelium, etc.
3. Magnified alveolus shows alveolus, alveolar epithelium, alveolar saccules, alveolar ducts and alveolar capillary.
4. Material: Advanced PVC and paint



JY/A6011-1

JY/A6011-2

JY/A6013 Thoracic Cavity Model

Features:

1. Separated into 17 parts and mounted on a base.
2. Size: Life size
3. Material: Advanced PVC and paint

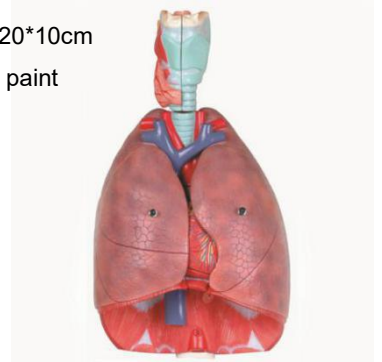


JY/A6014 Larynx, Heart and Lung

Features:

1. The model consists of larynx, lung, heart and blood vessels.
2. 51 positions are displayed.
3. Size: 3/4 times life size, 30*20*10cm
4. Material: Advanced PVC and paint

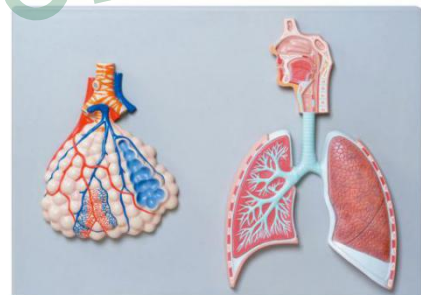
G.W.: 2.5kg



JY/A6015 Relief Model of Respiratory System with Pulmonary Alveoli

Features:

1. Size: 3/4 life size, 2 parts
2. Material: Advanced PVC and paint



JY/A6017 Respiratory Movement Model

Features:

1. Light-emitting display the respiratory system
2. Material: Advanced PVC

